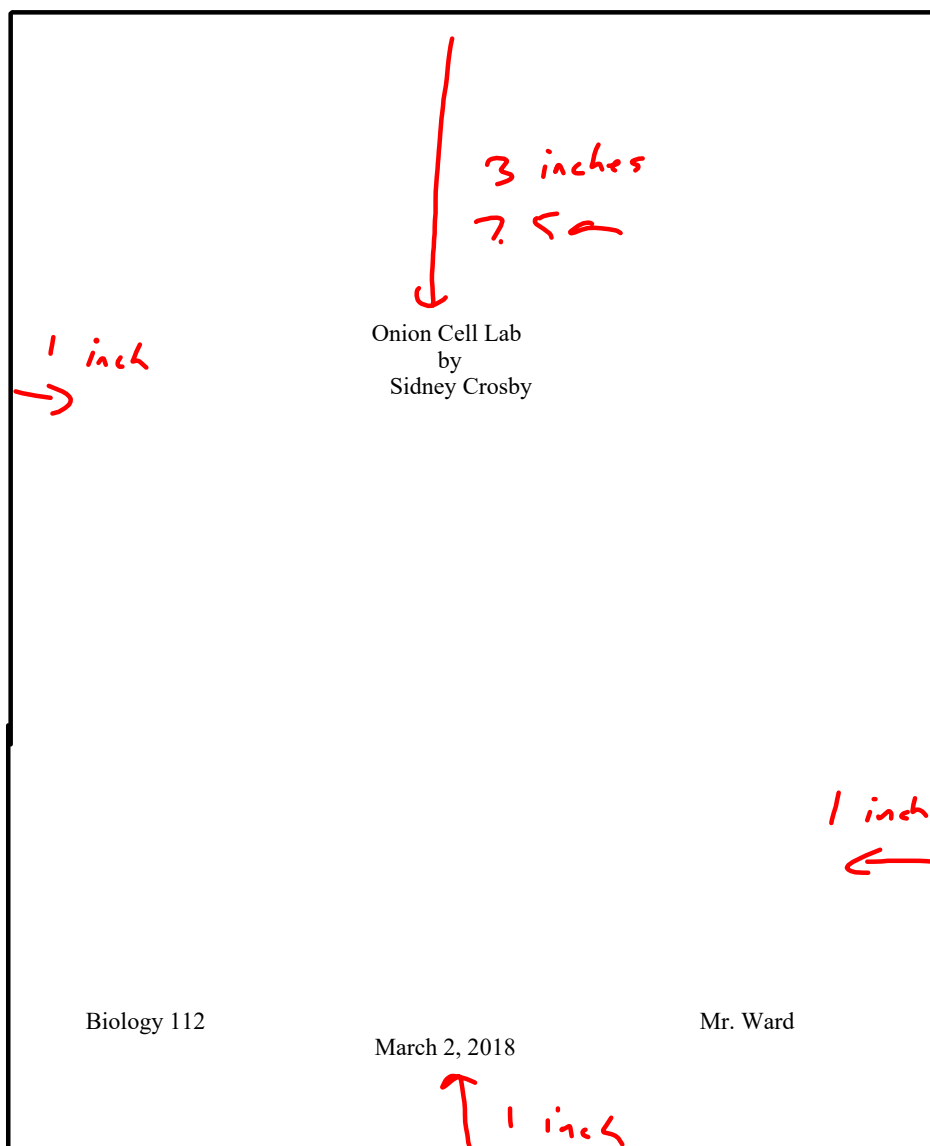


Lab Report

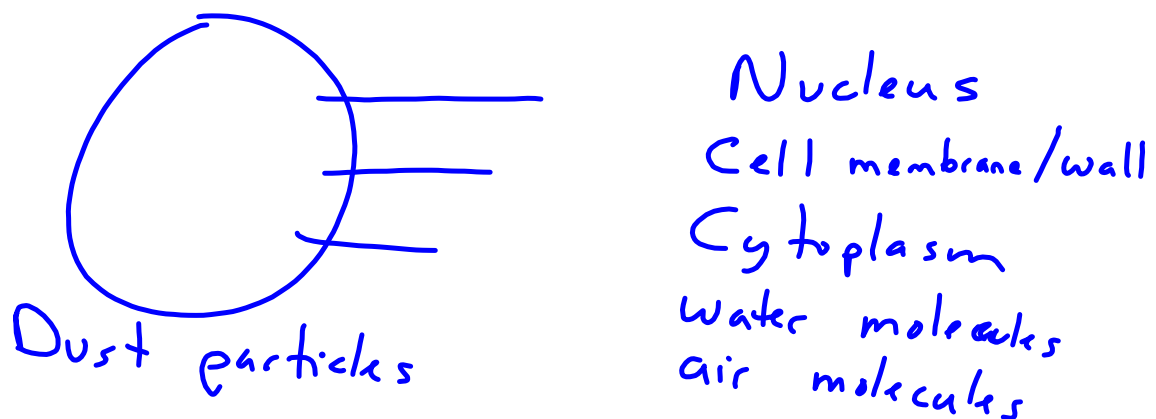
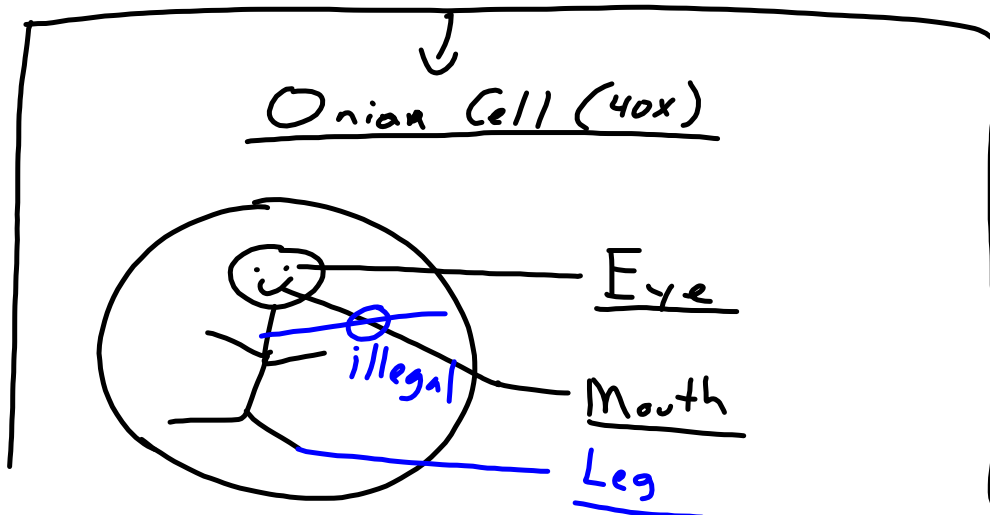
1. Title Page

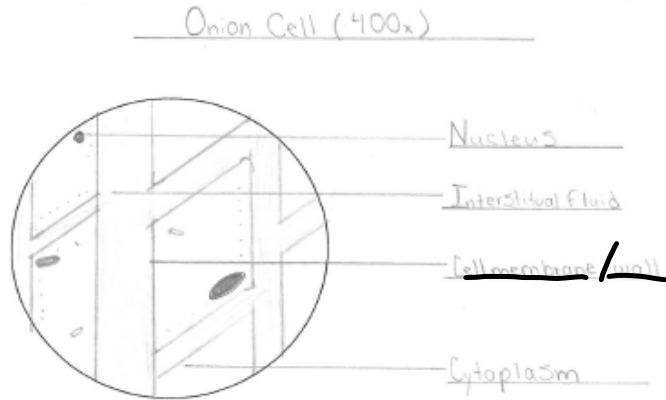
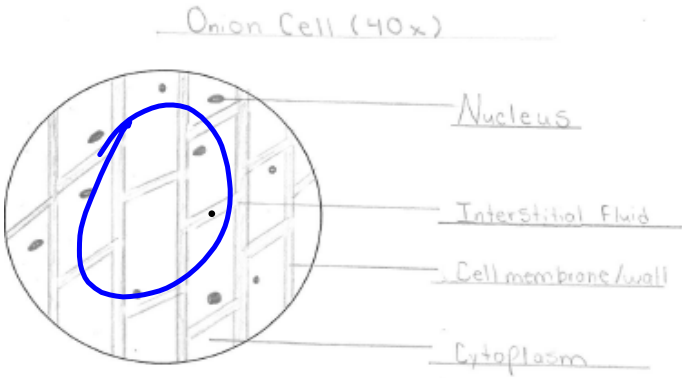
- Plain unlined paper
- Use computer 12 or 14 font
or write/print in black or blue ink
- title is centered 3 inches down for the top
- imaginary border of 1 inch on all other sides



Diagrams

- plain unlined paper
 - pencil only * (use may use your computer to draw the circle for this lab but everything else on the diagram page(s) is in pencil!!!)
 - title for each diagram
 - labels on the right, underlined
 - labels are to lined up underneath one another
 - use a RULER
- 1 inch border throughout*





Questions (typed or in pen)

Answer in full sentence form...must be able to stand on its own.

There are no, yes or no answers.

If part of the question is placed in the answer it allows the answer to stand on its own.

Ex. What is the effect of iodine on onion cells?

When iodine was added to the onion cells the following effect was observed,

Cell Length and Width Calculations:

Show work in pencil.

- *a. Show calculation for high power field of view *formula is on letter e lab !!!*
- b. Determine the length of 1 cell
- c. Determine the width of 1 cell

